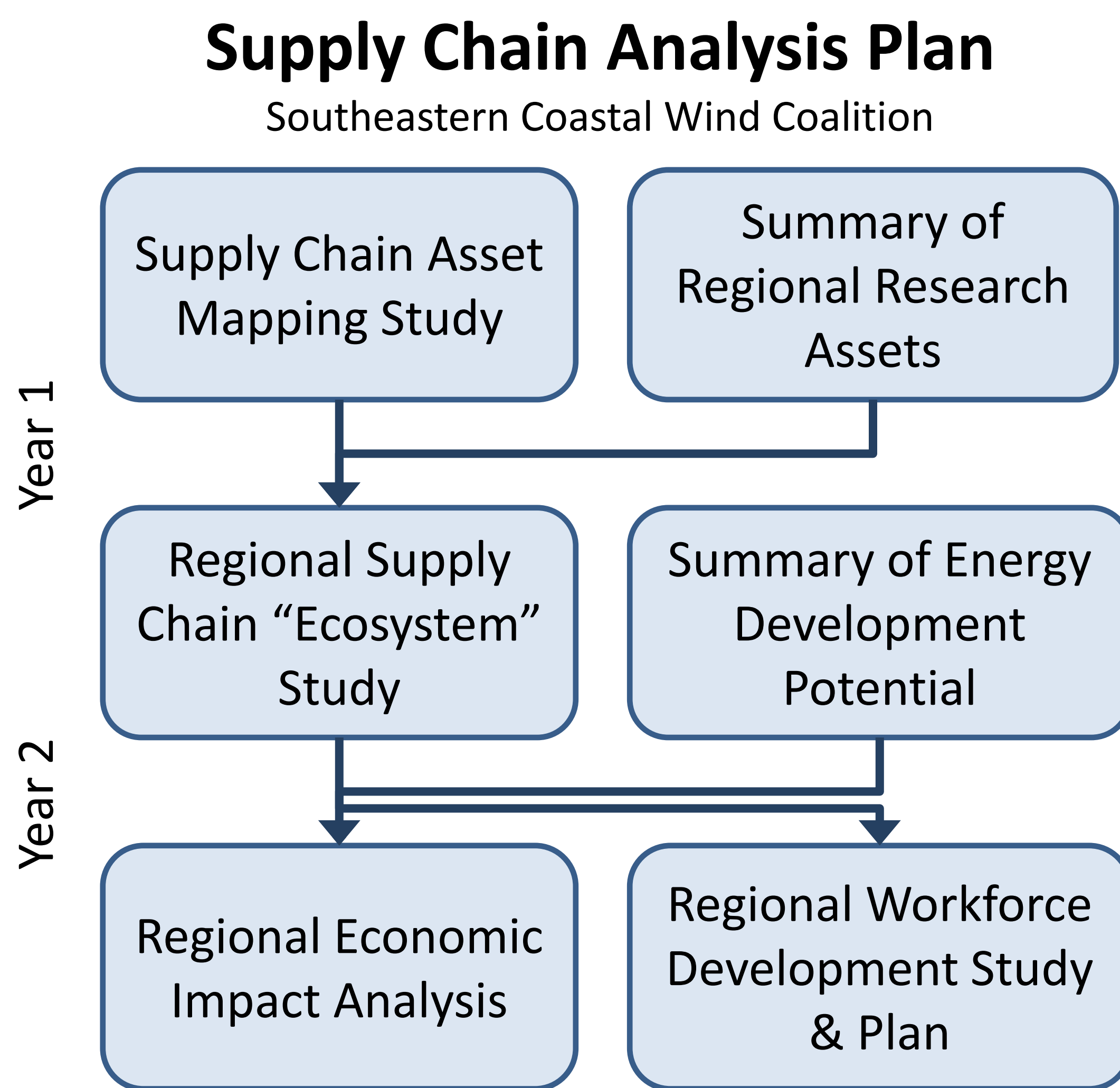


What the Southeast is Doing



Our Mission:

The mission of the Southeastern Coastal Wind Coalition is to advance the coastal and offshore wind industry in ways that result in net economic benefits to industry, utilities, ratepayers, and citizens of the Southeast.

Regional Stakeholder Outreach:

Utility Advisory Group

We believe that Southeastern utilities will play a critical role in the successful development of the coastal and offshore wind industry. The purpose of the Utility Advisory Group is to provide a forum for utility participants to discuss approaches to coastal and offshore wind energy, share lessons learned, and explore opportunities for multi-utility collaboration. We are fortunate to have committed participation from every major utility in the region, including Dominion Power, Duke Energy, Santee Cooper, SCANA, and Southern Company.

Economic Development Advisory Group

The purpose of the Economic Development Advisory Group is to foster discussions among economic developers in the region around areas of potential collaboration. We do not expect state-by-state competition to cease, but by collaborating where possible, the region has compelling advantages to attract industry. That allows the states to compete over a "bigger pie", which benefits all involved.

Industry Outreach

SEWC is taking a data driven, business backed, and utility-friendly approach to coastal and offshore wind in the Southeast. Engaging and coordinating the companies that represent the current and future wind industry supply in the region is critical to building the economic case for promoting the growth of the industry.

Benefits of a Regional Approach

1. Larger Scale

By aggregating demand from multiple, large electricity markets, a multi-state approach allows for long-term planning and large scale deployment that is beyond the capacity of any single state.

2. Lower Cost

Large-scale, long-term, stable development plans allow for economies of scale and supply chain efficiencies, which ultimately lower costs. Leveraging the strengths of each state also reduces overall cost.

3. Lower Risk

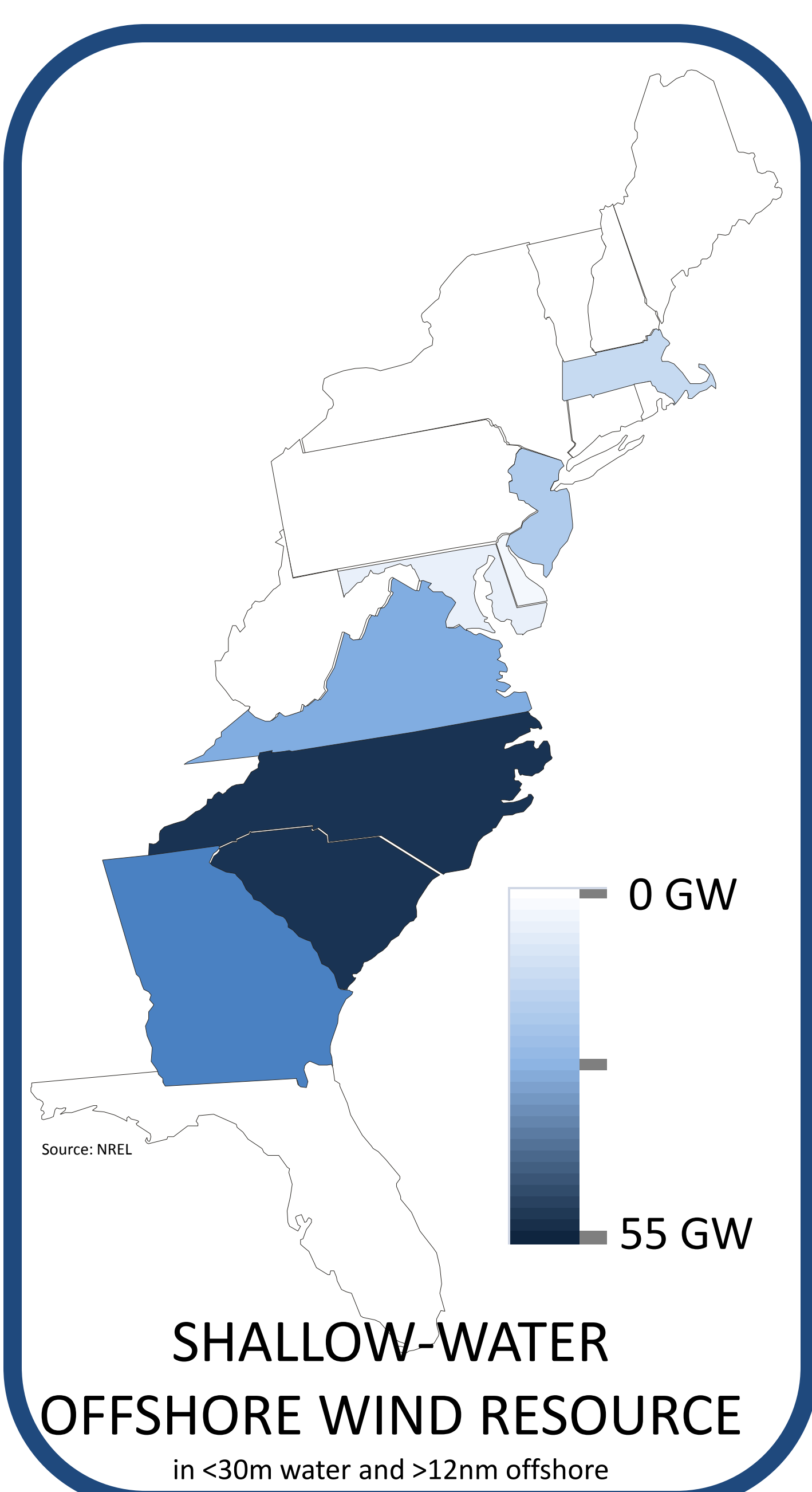
A regional approach allows the costs, benefits, and risks to be spread among multiple states, thus lowering the risk exposure of a state to any single project. This also allows a more gradual adaptation to integrating a variable resource into the grid.

4. The Credible Approach

The wind industry, whether land-based or offshore, is bigger than any one state, and no one state has everything the industry needs. Ultimately, a regional approach may be the only viable model for realizing the economic potential of coastal and offshore wind on the East Coast.

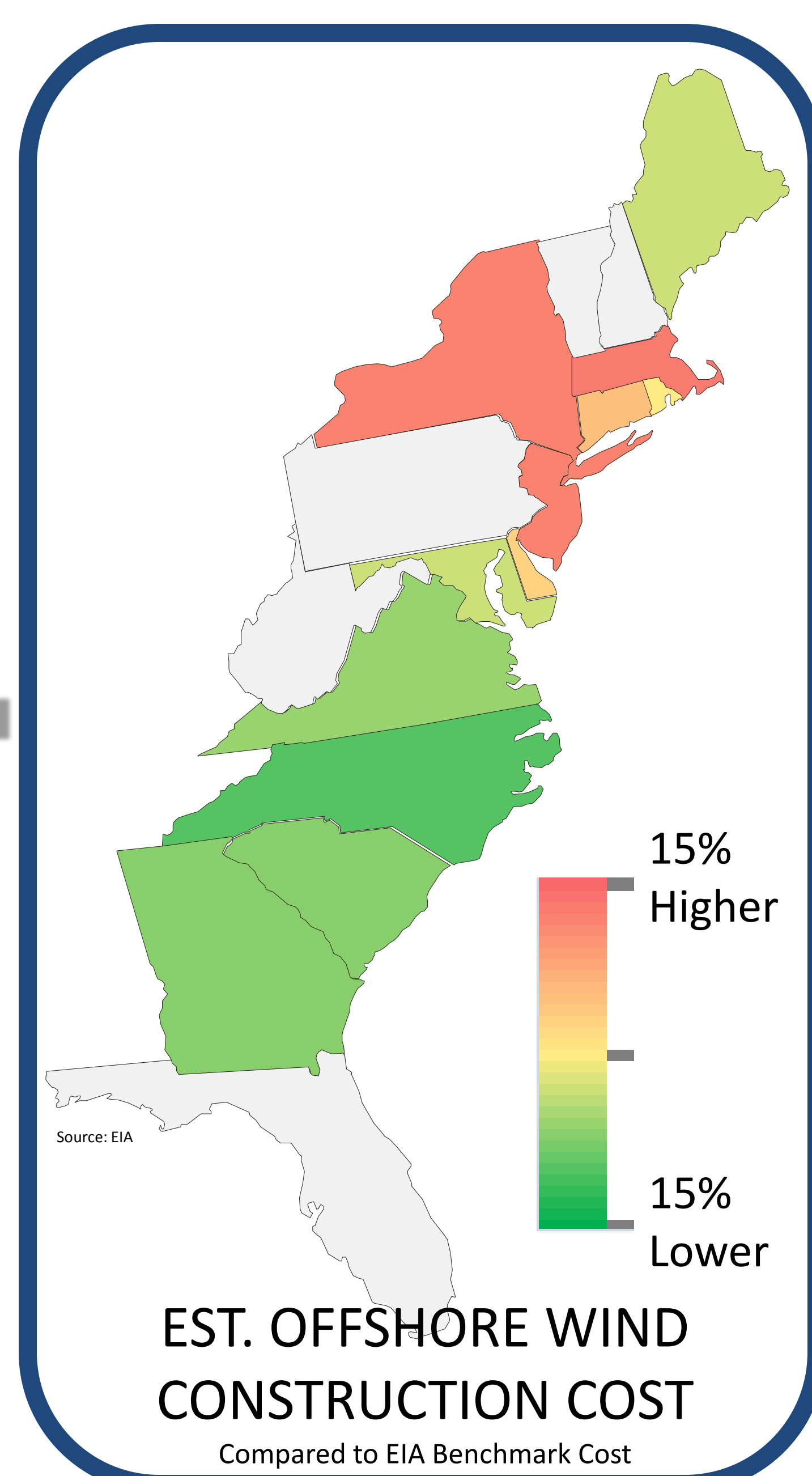
The Southeast's Competitive Advantages

Largest Resource



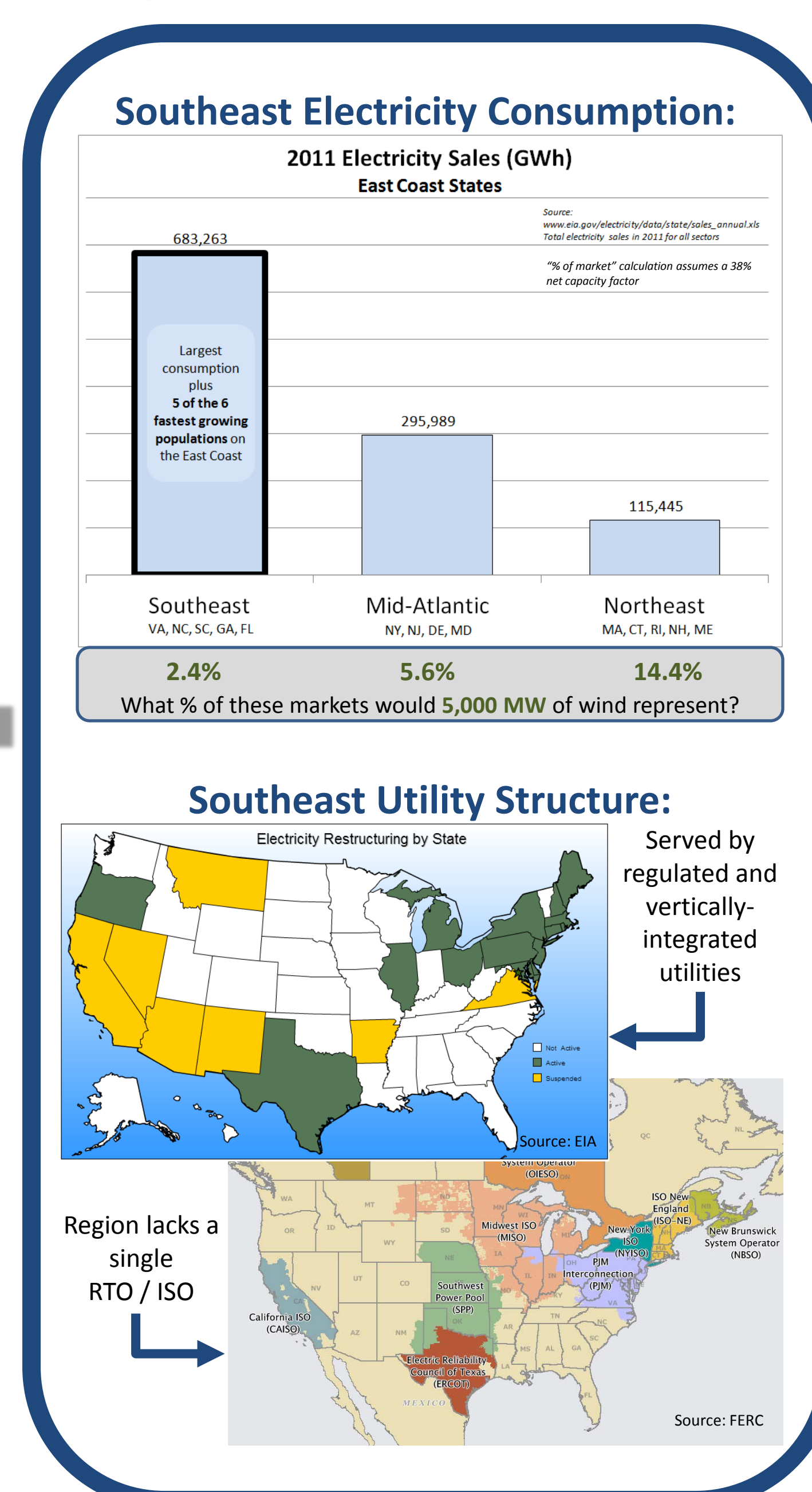
According to NREL estimates, VA, NC, SC, and GA have **82% of the East Coast offshore wind resource in shallow water and far offshore** (>12 miles) and 45% of the total resource on the East Coast.

Lowest Construction Cost



According to EIA estimates, NC, GA, SC, and VA are the **four lowest-cost states** on the East Coast for offshore wind construction, around 20-25% lower than states like MA, NY, and NJ.

Large Markets & Regulated Utilities



The Southeast is primarily served by **large, vertically-integrated, and regulated utilities**. This may require a different approach to wind energy and could offer some unique advantages.

Advantages of the Southeast



For more information

or to inquire about becoming a member, please contact:

Brian O'Hara, President
Southeastern Coastal Wind Coalition
briano@secoastalwind.org | 252-506-9463
www.secoastalwind.org